

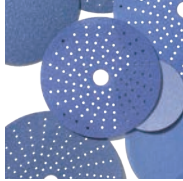


# ABRASIVES PRODUCT GUIDE

# Table of Contents



08\_ Advantage of Film Abrasives



10\_ Ceramic Film



12\_ Film



16\_ Gold



20\_ Sunfoam



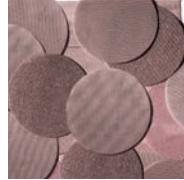
22\_ Flex Foam



23\_ Flexible Film



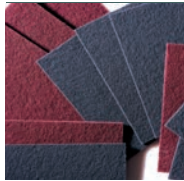
24\_ Sanding Sponge



25\_ Sun Net



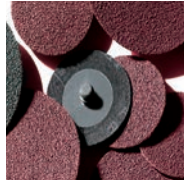
26\_ Waterproof



27\_ Scuff Products



28\_ Sanding System



32\_ Grinding Products



34\_ Retail Pack



36\_ Accessories



38\_ Paint Supplies

# Innovation in Abrasive Technology

Sun Abrasives strives to produce the best quality abrasives to meet the high expectations of our valuable customers. We are constantly developing new and innovative products to provide greater benefits to coated abrasive customers.



# We Are People in Pursuit of the Best Quality

Sun Abrasives Co. Ltd was established in 1961 to further develop the coated abrasive industry in Korea. From the beginning, our goal is to supply the highest quality products to the global market. To achieve this goal, we continue developing new products and quality systems through strong investment in research and development. We supply a wide range of coated abrasive products worldwide including North America, Europe, and Asia. Sun Abrasives Co. Ltd is now recognized as the solution to the most demanding applications.



## Profile of Company

- Registered Name : SUN ABRASIVES CO., LTD.
- Trademark : SUNMIGHT
- Headquarters: Ansan-City, Kyonggi-Do, S.KOREA.
- Product : Coated Abrasives Cloth, Paper, Film, etc.



## Company Policy

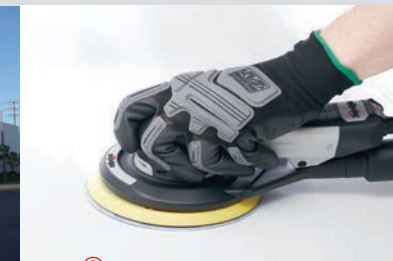
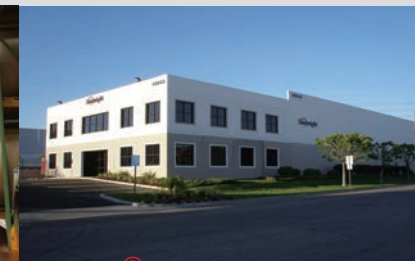
- Supply the best quality to the global market
- Provide the best products at competitive prices
- Provide the best service to customers



ISO 9001

KSA 9001

Quality System Certificate



1961  
KOREA ABRASIVES  
established in Seoul City

1970  
SUN ABRASIVES  
established  
in Buchon City

1988  
• Joint venture agreement  
with 3M U.S.A.  
• Groundbreaking  
of new plant in Ansan City

1990  
The construction  
of No.1 maker completed

2002  
SUNTEK  
The construction  
of new plant in Pyungtek

2005  
SUNMIGHT USA  
established  
in North America

2026  
The construction  
of No.4 maker completed

2026  
SUNMIGHT USA  
second warehouse  
opened in California

# Supplying the Best Quality to the Global Market

Aerospace



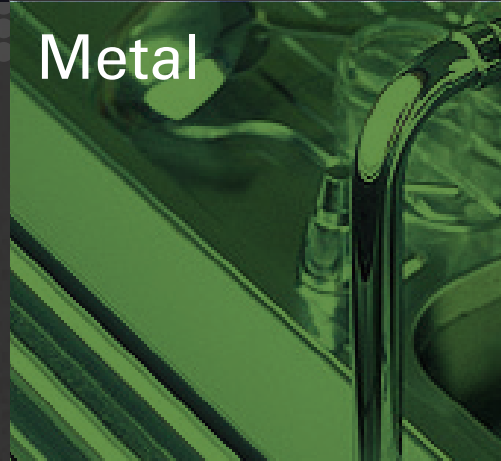
Automotive



Marine



Metal



Wood



# FILM

## Advantage of Film Abrasives

### Why Film ?

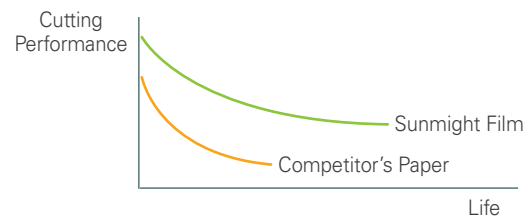
Film is much more durable than paper and will not tear easily. Its high durability provides longer product life and even surface provides outstanding finish. Film is the best choice for dry and wet sanding applications.

### Why Sunmight Film Abrasives ?

Sunmight Film is made with premium grain, strong resin bond, and special steared coating. This provides superior performance and life.

### Excellent Cutting and Long Lasting

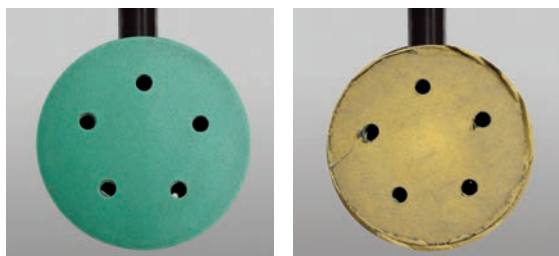
Sunmight Film's premium grain and strong resin bond provide faster and sharper cutting performance and longer life than competitors' products.



### Excellent Durability

Film backing is very strong and durable. It does not tear easily during sanding operation and is great for edges, corners, and irregular shapes.

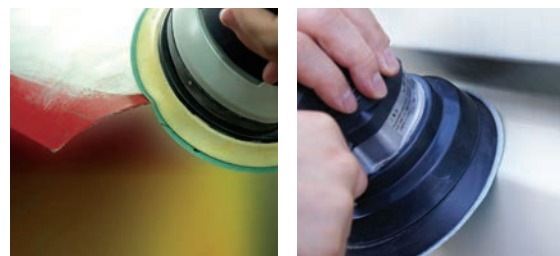
After Sanding



Film Product

Paper Product

Good for Edge & Corner Sanding



Edge Sanding

Corner Sanding

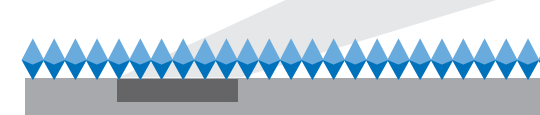
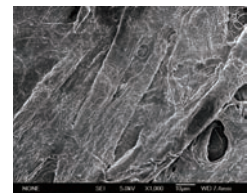
### Perfect Sanding Surface

With uniform mineral coating on perfectly even surface, film works better than paper. The result is outstanding finish without deep scratch marks.

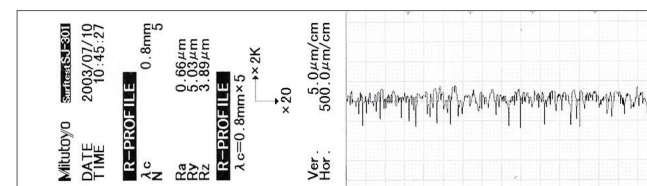
Film Backing  
(Even Surface)



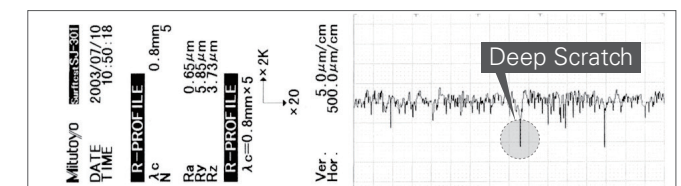
Paper Backing  
(Uneven Surface)



### Sanding Surface Roughness



After Sanding with Film Disc



After Sanding with Paper Disc

### Less Shelling Problems

Special resin over resin adhesion technology reduces shelling problems.

Advance Adhesion Technology



Sunmight Film



Competitor's Paper

# CERAMIC FILM

Sunmight Ceramic Multi-hole Disc is engineered with premium ceramic grains and the world best film technology for fast cutting and extra-long life. The new multi-hole pattern collects dust more efficiently for a cleaner working environment.

## Technical Specifications

<b>Grain</b>	Ceramic / Aluminum Oxide
<b>Backing</b>	Polyester Film
<b>Bond</b>	Phenolic Resin
<b>Coating</b>	Open Coat
<b>Grit Range</b>	80 ~ 800

### Application

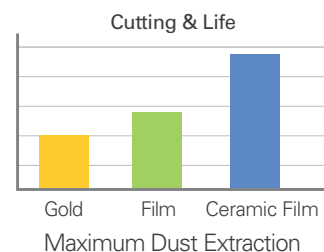


## Cuts Faster. Lasts Longer. Cleaner Work Environment.

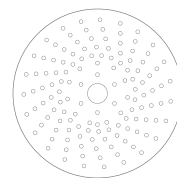
- Faster cuts and consistent finish
- Stays sharp and lasts longer
- Delivers outstanding performance with maximum dust extraction



Strong Premium Ceramic Grain



Maximum Dust Extraction

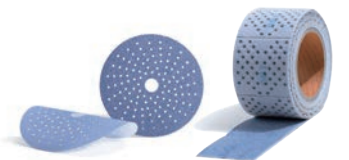


New multi-hole pattern with more holes for better dust extraction



Designed to help you run your shop **cleaner, safer, and more efficiently**

## Ceramic Multi-hole Film



NEW

NEW

NEW

NEW

DESCRIPTION	GRIT							PACKAGING			
	40	60	80	100	120	150	180	GRIT	QTY / BOX	BOX / CASE	QTY / CASE
3" Multi-hole Grip Disc	-	-	76306	76307	76308	76309	76310	80-800	50	4	200
	76311	76312	76314	76316	76317	76318	76319				
5" No hole PSA Link Roll Disc	-	-	77006	77007	77008	77009	77010	80-320	100	10	1000
	77011	76112	77014	-	-	-	-				
5" No hole Grip Disc	-	-	76106	76107	76108	76109	76110	80-320	50	10	500
	76111	76112	76114	-	-	-	-				
5" Multi-hole Grip Disc	76403	76405	76406	76407	76408	76409	76410	40-60 80-800	25 50	10	250 500
	76411	76412	76414	76416	76417	76418	76419				
6" No hole PSA Link roll Disc	-	-	78506	78507	78508	78509	78510	80-400	100	10	1000
	78511	78512	78514	78516	-	-	-				
6" No hole Grip Disc	-	-	76206	76207	76208	76209	76210	80-800	50	10	500
	76211	76212	76214	76216	76217	76218	76219				
6" Multi-hole Grip Disc	76503	76505	76506	76507	76508	76509	76510	40-60 80-800	25 50	10	250 500
	76511	76512	76514	76516	76517	76518	76519				
2-3/4" x 13.12 yd. Grip Sheet Roll	76603	76605	76606	76607	76608	76609	76610	40-400	1	4	4
	76611	76612	76614	76616	-	-	-				

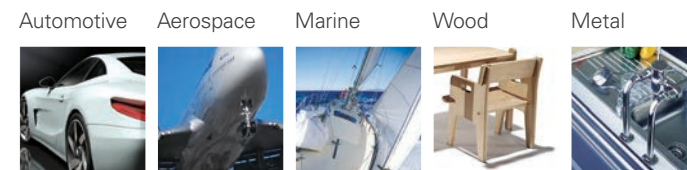
# FILM

Sunmight Film is a premium product with strong and even surface film backing that delivers better surface finish and longer life. It is also great for corner and edge sanding without problems with tearing.

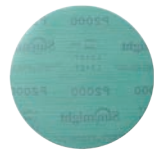
## Technical Specifications

<b>Grain</b>	Premium Aluminum Oxide
<b>Backing</b>	Polyester Film
<b>Bond</b>	Phenolic Resin
<b>Coating</b>	Open Coat
<b>Grit Range</b>	36 ~ 2500

### Application



## Film Grip Discs



Grip Disc



DESCRIPTION	GRIT										
	36	40	60	80	100	120	150	180	220	240	280
3" No hole Grip Disc	-	54203	-	54206	54207	54208	54209	54210	54211	54212	54213
5" No hole Grip Disc	01202	01203	01205	01206	01207	01208	01209	01210	01211	01212	01213
5" 5 hole Grip Disc	-	-	-	51206	51207	51208	51209	51210	51211	51212	-
5" 9 hole Grip Disc	-	-	-	46606	46607	46608	46609	46610	46611	46612	46613
5" Multi-hole Grip Disc	-	-	-	47306	47307	47308	47309	47310	47311	-	47313
6" No hole Grip Disc	01402	01403	01405	01406	01407	01408	01409	01410	01411	01412	01413
6" 6 hole Grip Disc	01802	01803	01805	01806	01807	01808	01809	01810	01811	01812	01813
6" 9 hole Grip Disc	-	-	-	51306	51307	51308	51309	51310	51311	51312	51313
6" 17 hole Grip Disc	-	47603	47605	47606	47607	47608	47609	47610	47611	47612	-
6" Multi-hole Grip Disc	-	-	-	47406	47407	47408	47409	47410	47411	47412	47413
8" No hole Grip Disc	01602	01603	01605	01606	01607	01608	01609	01610	01611	-	-
8" 8 hole Grip Disc	01002	01003	01005	01006	01007	01008	01009	01010	01011	-	-

										PACKAGING			
320	400	500	600	800	1000	1200	1500	2000	2500	GRIT	QTY / BOX	BOX / CASE	QTY / CASE
54214	54216	54217	54218	54219	54220	54221	54222	54223	54224	40-2500	50	4	200
01214	01216	01217	01218	01219	01220	01221	01222	01223	-	36-2000	50	10	500
51214	51216	51217	51218	51219	51220	-	-	-	-	80-1000	50	10	500
46614	-	46617	46618	46619	46620	46621	46622	46623	-	80-2000	50	10	500
47314	47316	-	47318	47319	47320	47321	47322	-	-	80-2000	50	10	500
01414	01416	01417	01418	01419	01420	01421	01422	01423	01424	36-2500	50	10	500
01814	01816	01817	01818	01819	01820	01821	01822	01823	-	36-2000	50	10	500
51314	51316	51317	-	-	-	-	-	-	-	80-500	50	10	500
47614	47616	47617	47618	47619	-	-	-	-	-	40-800	50	10	500
47414	47416	47417	47418	47419	47420	47421	47422	47423	-	80-2000	50	4	200
01614	01616	-	01618	01619	-	-	-	-	-	36-800	50	4	200
01014	-	-	-	-	-	-	-	-	-	36-320	50	4	200



## Film PSA Discs



PSA Disc

DESCRIPTION	GRIT										
	36	40	60	80	100	120	150	180	220	240	280
5" No hole PSA Disc	01102	01103	01105	01106	01107	01108	01109	01110	01111	01112	01113
5" No hole PSA Link Roll Disc	-	-	-	33106	33107	33108	33109	33110	33111	33112	33113
5" 5 hole PSA Disc	-	-	-	51106	51107	51108	51109	51110	51111	51112	51113
6" No hole PSA Disc	01302	01303	01305	01306	01307	01308	01309	01310	01311	01312	01313
6" No hole PSA Link Roll Disc	-	-	-	00506	00507	00508	00509	00510	00511	00512	00513
8" No hole PSA Disc	01502	01503	01505	01506	01507	01508	01509	01510	01511	01512	-



									PACKAGING						
320	400	500	600	800	1000	1200	1500	2000	GRIT		QTY/ BOX		BOX/ CASE	QTY/ CASE	
01114	01116	01117	01118	01119	01120	01121	01122	01123	36~40	50~2000	50	100	10	500	1000
33114	33116	33117	-	-	-	-	-	-	80~500		100		10	1000	
51114	51116	51117	51118	51119	51120	51121	51122	51123	80~2000		100		10	1000	
01314	01316	01317	01318	01319	01320	01321	01322	01323	36~40	50~2000	50	100	10	500	1000
00514	00516	00517	-	-	-	-	-	-	80~500		100		10	1000	
01514	01516	-	01518	01519	-	-	-	-	36~600		50		4	200	

## Film Sheets



File Sheet

Sheet Roll

DESCRIPTION	GRIT										
	36	40	60	80	100	120	150	180	220	240	280
2-3/4" x 17-1/2" Plain File Sheet	04102	04103	-	04106	04107	04108	04109	04110	04111	-	-
2-3/4" x 16-1/2" PSA File Sheet	04202	04203	04205	04206	04207	04208	04209	04210	04211	-	-
2-3/4" x 16-1/2" Grip File Sheet	04402	04403	04405	04406	04407	04408	04409	04410	04411	-	-
2-3/4" x 25 yd. PSA Sheet Roll	-	-	-	06206	06207	-	-	-	-	-	-
4-1/2" x 25 yd. Grip Sheet Roll	11202	11203	-	11206	11207	11208	11209	11210	11211	11212	11213
4-1/2" x 25 yd. PSA Sheet Roll	22302	22303	-	22306	22307	22308	22309	22310	22311	22312	22313
2-3/4" x 45 yd. PSA Sheet Roll	22102	22103	-	22106	22107	22108	22109	22110	22111	22112	22113



									PACKAGING				
320	400	500	600	800	1000	1200	1500	2000	GRIT	QTY/ BOX	BOX/ CASE	QTY/ CASE	
-	-	-	-	-	-	-	-	-	36~220	50	5	250	
-	-	-	-	-	-	-	-	-	36~220	50	5	250	
-	-	-	-	-	-	-	-	-	36~220	50	5	250	
-	-	-	-	-	-	-	-	-	80~100	1	4	4	
11214	11216	-	-	-	-	-	-	-	36~400	1	4	4	
22314	22316	-	-	-	-	-	-	-	36~400	1	4	4	
22114	22116	22117	-	-	-	-	-	-	36~500	1	4	4	

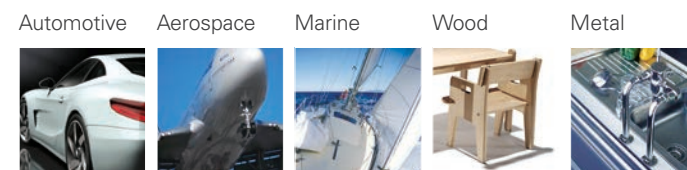
# GOLD

Sunmight Gold is made with premium aluminum oxide grain, high-quality latex paper, and strong phenol resin. If you are looking for the best combination of performance, reliability, and value, our Sunmight Gold is your answer.

## Technical Specifications

<b>Grain</b>	Premium Aluminum Oxide
<b>Backing</b>	Latex Paper
<b>Bond</b>	Phenolic Resin
<b>Coating</b>	Open Coat
<b>Grit Range</b>	40 ~ 1200

### Application



## Gold Grip Discs



No hole Grip Disc



DESCRIPTION	GRIT									
	40	60	80	100	120	150	180	220	240	280
3" No hole Grip Disc	-	-	43506	-	43508	43509	43510	43511	43512	-
5" No hole Grip Disc	-	02205	02206	02207	02208	02209	02210	02211	02212	02213
5" 5 hole Grip Disc	-	52205	52206	52207	52208	52209	52210	52211	52212	-
5" 8 hole Grip Disc	-	58105	58106	58107	58108	58109	58110	58111	58112	58113
6" No hole Grip Disc	02403	02405	02406	02407	02408	02409	02410	02411	02412	02413
6" 6 hole Grip Disc	-	-	02806	02807	02808	02809	02810	02811	02812	02813

							PACKAGING			
320	400	500	600	800	1000	1200	GRIT	QTY / BOX	BOX / CASE	QTY / CASE
43514	43516	43517	43518	43519	-	-	80~800	50	10	500
02214	02216	02217	02218	02219	02220	02221	60~1200	50	10	500
52214	52216	-	52218	-	-	-	60~600	50	10	500
58114	58116	58117	58118	58119	-	-	60~800	50	10	500
02414	02416	02417	02418	02419	02420	02421	40~1200	50	10	500
02814	02816	02817	02818	02819	02820	02821	80~1200	50	10	500



## Gold PSA Discs



PSA Disc

PSA Disc Roll



DESCRIPTION	GRIT									
	40	60	80	100	120	150	180	220	240	280
5" No hole PSA Disc	-	02105	02106	02107	02108	02109	02110	02111	-	02113
5" No hole PSA Link Roll Disc	-	-	34106	34107	34108	34109	34110	34111	34112	-
5" 5 hole PSA Disc	-	-	52106	52107	52108	52109	52110	52111	52112	52113
6" No hole PSA Disc	02303	02305	02306	02307	02308	02309	02310	02311	02312	02313
6" No hole PSA Link Roll Disc	-	-	00606	00607	00608	00609	00610	00611	00612	00613
6" No hole PSA Link Roll Disc (25 PC)	-	-	00606S	00607S	00608S	00609S	00610S	00611S	-	-
8" No hole PSA Disc	02503	-	02506	02507	02508	02509	02510	02511	02512	-

							PACKAGING						
320	400	500	600	800	1000	1200	GRIT		QTY / BOX		BOX / CASE	QTY / CASE	
02114	02116	02117	02118	02119	02120	02121	60-1200		100		10	1000	
34114	34116	34117	34118	34119	-	-	80-800		100		10	1000	
52114	52116	52117	52118	52119	52120	52121	80-1200		100		10	1000	
02314	02316	02317	02318	02319	02320	02321	40	60-1200	50	100	10	500	1000
00614	00616	00617	-	-	-	-	80-500		100		10	1000	
00614S	00616S	00617S	-	-	-	-	80-500		25		10	250	
02514	-	-	02518	-	-	-	40-600		50		4	200	

## Gold Sheets & Soft Flex



File Sheet

Sheet Roll

Soft Flex



DESCRIPTION	GRIT									
	40	60	80	100	120	150	180	220	240	280
2-3/4" x 17-1/2" Plain File Sheet	05103	05105	05106	05107	05108	05109	05110	05111	-	-
2-3/4" x 16-1/2" PSA File Sheet	05203	05205	05206	05207	05208	05209	05210	05211	-	-
2-3/4" x 16-1/2" Grip File Sheet	05403	05405	05406	05407	05408	05409	05410	05411	-	-
2-3/4" x 25 yd. PSA Sheet Roll	22203	-	22206	22207	22208	22209	22210	22211	22212	-
2-3/4" x 45 yd. PSA Sheet Roll	06103	06105	06106	06107	06108	06109	06110	06111	06112	06113
9" x 11" Plain Sheet	09103	-	09106	09107	09108	09109	09110	09111	09112	09113
4-1/2" x 27 yd. Soft Flex Roll	-	32105	32106	32107	32108	32109	32110	32111	32112	32113

							PACKAGING						
320	400	500	600	800	1000	1200	GRIT		QTY / BOX		BOX / CASE	QTY / CASE	
-	-	-	-	-	-	-	40-220		50		5	250	
-	-	-	-	-	-	-	40-220		50		5	250	
05414	-	-	-	-	-	-	40-320		50		5	250	
22214	22216	22217	22218	-	-	-	40-500		1		4	4	
06114	06116	06117	-	-	-	-	40-500		1		4	4	
09114	09116	09117	09118	09119	-	-	40-800		50		10	500	
32114	32116	32117	32118	32119	32120	32121	60-1200		1		4	4	

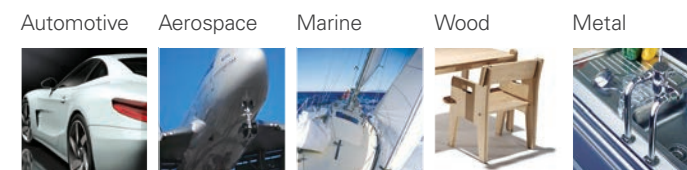
# SUNFOAM

Sunfoam is made with fabric and foam structure to provide outstanding finish and even surface pressure. Its special abrasives coating on the fabric allows sanding and polishing at same time to finish your work much faster. It is great for curved and contour surfaces and works well on wet sanding.

## Technical Specifications

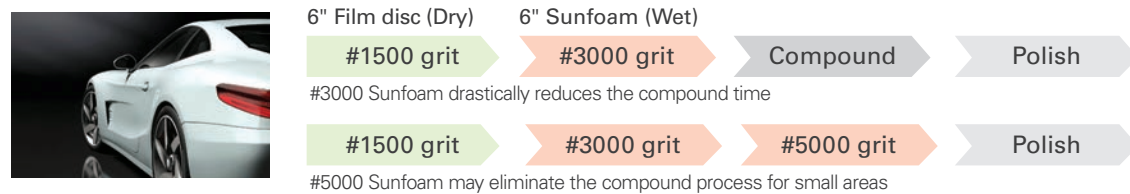
<b>Grain</b>	Aluminum Oxide - Sunfoam Silicon Carbide - SC Sunfoam
<b>Backing</b>	Fabric on Foam
<b>Bond</b>	Resin over Resin
<b>Coating</b>	Special coating on the fabric
<b>Grit Range</b>	360 ~ 5000

### Application



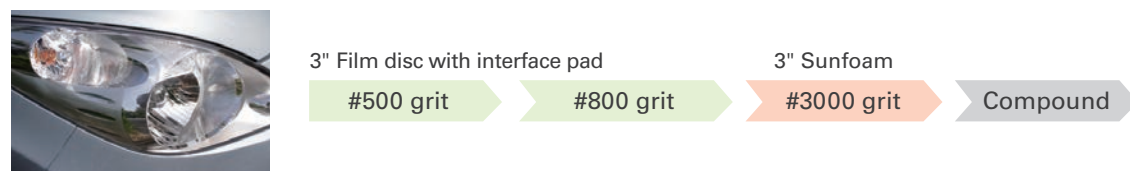
## Main Applications and Recommended Steps

### •Clear Coat : Removing orange peel or paint runs

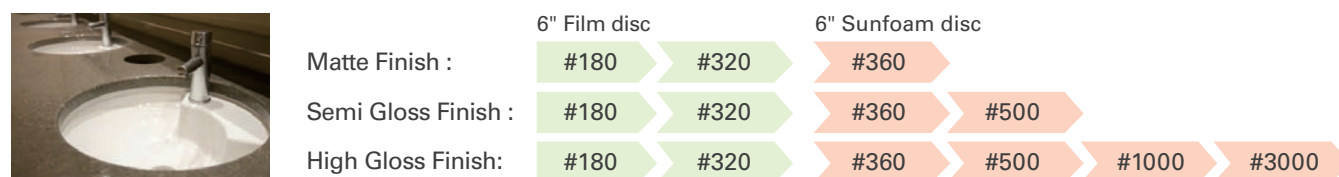


- Suggested to use with Soft Backing Pad (08500) and Interface Pad (09600)

### •Automotive Headlights : Refurbishing the gray old headlights (Wet sanding)



### •Solid Surface : Matte, Semi-Gloss, High-Gloss finish (Wet or Dry sanding)

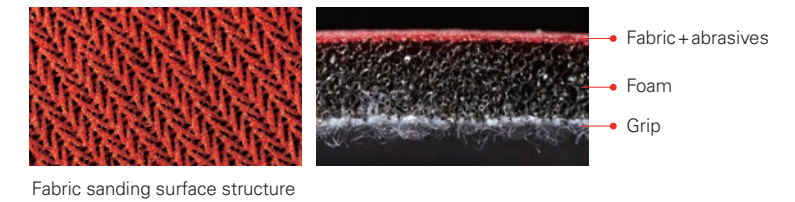


### •Others : Furniture, Instruments, Bowling balls, Plastic, etc.

## New Innovation of Finishing

### Fabric and foam structure

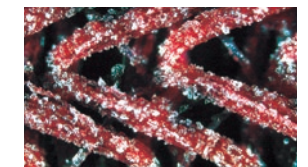
- Provide a better finish without deep scratch
- Provide even surface pressure
- Good for wet sanding
- Good for contour or curved sanding



Fabric sanding surface structure

### Special abrasive coating on the fabric

- Allows grinding and polishing at the same time
  - : Reduces the compound polishing time (Clear Coat finishing)
  - : Makes a desirable gloss much faster (Solid surface finishing)



Abrasive grains on fabric surface

## Sunfoam



Grip Disc

DESCRIPTION	GRIT							PACKAGING			
	360	500	800	1000	2000	3000	5000	GRIT	QTY / BOX	BOX / CASE	QTY / CASE
3" No hole Grip Disc	96115	96117	96119	96120	96123	96125	96127	360-5000	20	4	80
6" No hole Grip Disc	96215	96217	96219	96220	96223	96225	96227	360-5000	10	4	40

## Sunfoam SC



Grip Disc

DESCRIPTION	GRIT				PACKAGING			
	1000	2000	3000	5000	GRIT	QTY / BOX	BOX / CASE	QTY / CASE
3" No hole Grip Disc	97120	97123	97125	-	1000-3000	20	4	80
6" No hole Grip Disc	97220	97223	97225	97227	1000-5000	10	4	40

# FLEX FOAM

Sunmight Flex Foam Sanding Discs, with their unique stearate coating and flexible foam backing, provide optimal contact on curved surfaces, preventing deep scratches and ensuring even pressure distribution. The multi-hole design minimizes clogging and reduces swirl marks, making them suitable for both wet and dry sanding.

## Technical Specifications

<b>Grain</b>	Premium Aluminum Oxide
<b>Backing</b>	Film, Sponge with Grip
<b>Bond</b>	Resin over Resin
<b>Coating</b>	Semi-Close with Stearate Coating
<b>Grit</b>	400 ~ 2000

## Application

Automotive Aerospace Marine Wood



## Key Benefits

- Superior Flexibility
- Anti-Clogging
- Highly Efficient in Dry Sanding
- User-Friendly



# FLEXIBLE FILM

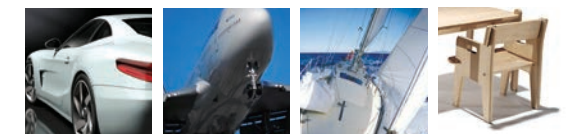
Sunmight Flexible Sheets and Discs are made with highly flexible resin and film backing to provide fast cutting and best finishing. The products' high flexibility allow better contact on contour and concave surfaces such as bumper covers, door frames, and car hoods.

## Technical Specifications

<b>Grain</b>	Premium Aluminum Oxide
<b>Backing</b>	Very Flexible Film
<b>Bond</b>	Flexible Resin
<b>Coating</b>	Semi-Close
<b>Grit</b>	240 ~ 1500

## Application

Automotive Aerospace Marine Wood



## Flexible Backing and Elastic Resin

- Good for contour and concave surface sanding



- Flexible resin and backing prevent deep scratches and over-sanding problem
- Much faster cutting than conventional abrasive products

## Flexible Film



## NEW Flex Foam

DESCRIPTION	GRIT							PACKAGING			
	400	600	800	1000	1200	1500	2000	GRIT	QTY / BOX	BOX / CASE	QTY / CASE
3" Multi-hole Grip Disc	03516	03518	03519	03520	03521	03522	03523	400~2000	20	8	160
6" Multi-hole Grip Disc	03716	03718	03719	03720	03721	03722	03723	400~2000	10	8	80

DESCRIPTION	GRIT				PACKAGING			
	Brown 240~320	Blue 400~600	Yellow 800~1000	Orange 1200~1500	GRIT	QTY / BOX	BOX / CASE	QTY / CASE
5-1/4" x 6-3/4" Flexible Sheet	60112	60118	60119	60122	240~1500	25	4	100
6" No hole Grip Flexible Disc	60212	60218	60219	60222	240~1500	25	4	100
3" x 4-3/4" Soft Pad for Flexible Sheet	60100					1	20	20

# SANDING SPONGE

Sunmight Sanding Sponges are high-performance abrasive-coated foam pads designed for flexibility and durability. They are easy to grip and work well on both contoured and flat surfaces. Suitable for wet or dry sanding, they can also be rinsed and reused.

# SUN NET

Sun Net is the ultimate solution for dust-free sanding. Its unique net construction allows full surface dust extraction for clean and healthy working environment. Sunmight's special abrasives coating technology on net backing provides excellent cutting performance and less clogging problem.

## Technical Specifications

**Backing** Sponge  
**Bond** Resin over Resin  
**Grit Range** Medium ~ Micro Fine

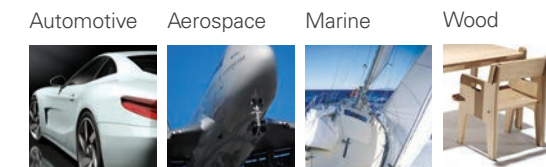
## Application



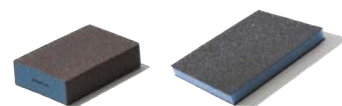
## Technical Specifications

**Grain** Premium Aluminum Oxide  
**Backing** Knitted Fabric  
**Bond** Resin over Resin  
**Coating** Closed Coat  
**Grit** 80 ~ 600

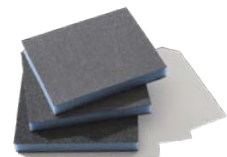
## Application



## NEW Sanding Sponge Block



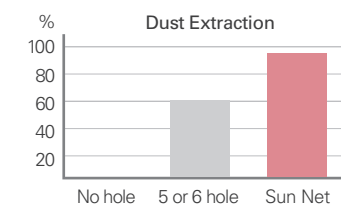
Sponge Block



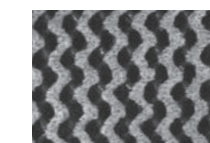
DESCRIPTION	GRIT			PACKAGING		
	Medium	Fine	Super Fine	QTY / BOX	BOX / CASE	QTY / CASE
4-Sided Sponge (4" x 2-5/8" x 1")	89705	89707	89710	10	10	100
2-Sided Sponge (3-1/2" x 4-1/2" x 1/2")	89805	89807	89810	10	10	100

## Dust-Free Sanding with Better Life

- Dust-free sanding allows clean and healthy working environment
- Special abrasive coating method prevents clogging problems



Maximum Dust Extraction

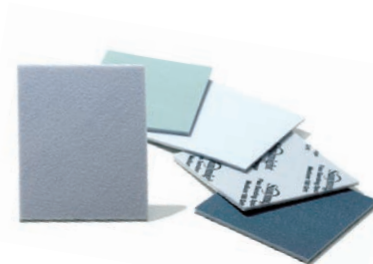


Special grain coating on net

## Flex Sanding Pad



Sponge



DESCRIPTION	GRIT					PACKAGING		
	Medium	Fine	Super Fine	Ultra Fine	Micro Fine	QTY / BOX	BOX / CASE	QTY / CASE
Flex Sanding Pad (5-1/2" x 4-1/2" x 3/16")	89910	89914	89918	89919	89922	20	4	80

## Sun Net



Grip Disc



Grip Sheet Roll



DESCRIPTION	GRIT										PACKAGING			
	80	100	120	150	180	220	240	320	400	600	GRIT	QTY / BOX	BOX / CASE	QTY / CASE
3" Grip Disc	82906	82907	82908	82909	82910	82911	82912	82914	82916	82918	80-600	50	4	200
5" Grip Disc	82106	82107	82108	82109	82110	82111	82112	82114	82116	82118	80-600	50	10	500
6" Grip Disc	82206	82207	82208	82209	82210	82211	82212	82214	82216	82218	80-600	50	10	500
2-3/4" x 33.5' Grip Sheet Roll *	82006	82007	82008	82009	82010	82011	82012	82014	82016	-	80-400	1	4	4

\* Perforated every 2-3/4"

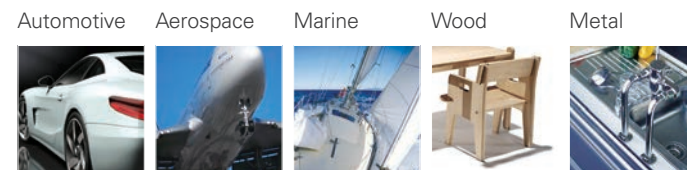
# WATERPROOF

Sunmicht Waterproof is made with high-quality, water-resistant paper backing for flexibility and outstanding finish. Special resin technology reduces possible curling problems during wet sanding operations.

## Technical Specifications

<b>Grain</b>	Grit 180 ~ 800	Aluminum Oxide
	Grit 1000 ~ 3000	Silicon Carbide
<b>Backing</b>	Latex Paper	
<b>Bond</b>	Resin over Resin	
<b>Coating</b>	Closed Coat	
<b>Grit Range</b>	180 ~ 3000	

### Application



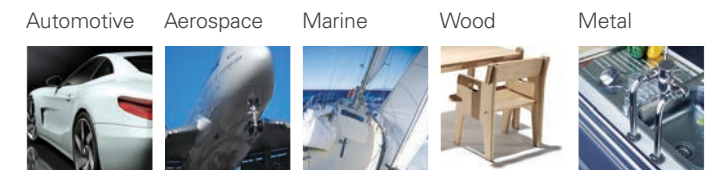
# SCUFF PRODUCTS

Sunmicht Scuff products are an excellent choice for surface preparation and fine finishing. Sunmicht Flex Scuff Pads have a thinner, highly flexible structure and work great on corners and contoured surfaces. They are suitable for automotive refinishing and industrial applications.

## Technical Specifications

<b>Grain</b>	Maroon - Aluminum Oxide
	Gray - Silicon Carbide
<b>Bond</b>	Phenolic Resin
<b>Coating</b>	Special Coating on Non-Woven

### Application



## Waterproof



Sheet



DESCRIPTION	GRIT										PACKAGING			
	60	80	120	150	180	220	240	280	320	360	GRIT	QTY / BOX	BOX / CASE	QTY / CASE
9" x 11" Plain Sheet	08105	08106	08108	08109	08110	08111	08112	08113	08114	08115				
	08116	08117	08118	08119	08120	08121	08122	08123	08124	08125				
5-1/2" x 9" Plain Sheet	-	-	-	-	-	-	-	-	-	-	1000-3000	50	5	250
	-	-	-	-	07220	07221	07222	07223	07224	07225				

## Scuff Products



Pad

Roll

Disc



DESCRIPTION	GRIT		PACKAGING				
	VERY FINE (MAROON)	ULTRA FINE (GRAY)	QTY / BOX	BOX / CASE	QTY / CASE	BOX / BULK CASE	QTY / BULK CASE
6" x 9" Scuff Pad	80100	80200	20	4	80	16	320
4" x 10 yd. Scuff Roll	80300	80400	1	4	4	16	16
4.5" x 9" Flex Scuff Pad	80500	80600	25	4	100	16	400
4.5" x 11 yd. Flex Scuff Roll	81100	81200	1	4	4	16	16
6" Scuff Disc	81840	81830	25	4	100	-	100

# SANDING SYSTEM

Powerful but quiet vacuum system helps you run your shop cleaner and more efficiently. The sanding cart is specially designed for small and tight spaces and is great for keeping all your abrasives, tools, and vacuum unit in one place.



## Vacuum Unit & Sanding Cart

DESCRIPTION	PART NO.	PACKAGING		
		QTY / BOX	BOX / CASE	QTY / CASE
Pneumatic Vacuum Unit 45L (Vacuum Unit, Vacuum Hose with blue air hose)	84100	1	1	1
Electric Vacuum Unit 45L (Vacuum Unit, Vacuum Hose)	84200	1	1	1
Sanding Cart	84300	1	1	1

## Key Benefits

- Can use two tools at the same time
- Can be used as either electric or pneumatic



- Low maintenance with automatic filter cleaning



Air cycle during normal operation



Air cycle during filter cleaning



## Sanding Cart

- 4 premium rubberized swiveling wheels
- Large work surface for tools and abrasives
- 2 hangers for tools and hoses
- Larger drawer for extra storage

## Perfect for Small and Tight Space



Drawer for Extra Storage



Caster Locking Wheels



Large Work Space



84300 Sanding Cart

# Vacuum Sanding Kit



DESCRIPTION	PART NO.	PACKAGING		
		QTY / BOX	BOX / CASE	QTY / CASE
Pneumatic Vacuum Sanding Kit for Body Repair - 84100, 84300, 88400, 88800, 88900 - 87900 (6" 3/16" Vacuum Orbital Sander)	84150	1	1	1
Pneumatic Vacuum Sanding Kit for Paint Prep - 84100, 84300, 88400, 88800, 88900 - 86800 (6" 3/32" Vacuum Orbital Sander)	84160	1	1	1
Electric Vacuum Sanding Kit for Body Repair - 84200, 84300, 88700, 88800, 88900 - 88500 (6" 3/16" Vacuum Electric Sander)	84250	1	1	1
Electric Vacuum Sanding Kit for Paint Prep - 84200, 84300, 88700, 88800, 88900 - 88600 (6" 3/32" Vacuum Electric Sander)	84260	1	1	1

- We offer four different bundle packages with all necessary items at a discount
- Each bundle package includes a vacuum unit, a sanding cart, and vacuum sanders

## Electric Vacuum Sanding Kit



84100: Vacuum Unit with Pneumatic Hose

84300: Cart



87900 / 86800: 6" Orbital Sander  
88400: 2.75" x 7.75" Orbital Sander  
88900: 2.75" x 5" Hand Sander

## Pneumatic Vacuum Sanding Kit



84200: Vacuum Unit with Electric Hose

84300: Cart



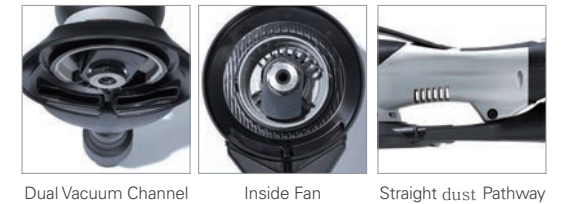
88500 / 88600: 6" Electric Sander  
88700: 2.75" x 7.75" Electric Sander  
88800: 2.75" x 5" Hand Sander

# Vacuum Orbital Sander



DESCRIPTION	PART NO.	PACKAGING		
		QTY / BOX	BOX / CASE	QTY / CASE
3" (3/16") Central Vacuum Random Orbital Sander	85900	1	1	1
3" (3/32") Central Vacuum Random Orbital Sander	85800	1	1	1
5" (3/16") Central Vacuum Random Orbital Sander	87700	1	1	1
5" (3/32") Central Vacuum Random Orbital Sander	86600	1	1	1
6" (3/16") Central Vacuum Random Orbital Sander	87900	1	1	1
6" (3/32") Central Vacuum Random Orbital Sander	86800	1	1	1
2.75 x 7.75" (1/8") Central Vacuum Random Orbital Sander	88400	1	1	1
6" (3/16") Central Vacuum Electric Sander	88500	1	1	1
6" (3/32") Central Vacuum Electric Sander	88600	1	1	1
2.75 x 7.75" (1/8") Central Vacuum Electric Sander	88700	1	1	1
2.75" x 5" Vacuum Hand Sander	88000	1	5	5
2.75" x 7.75" Vacuum Hand Sander	88900	1	5	5

- Dual vacuum channel to maximize dust extraction
- Fan inside to prevent overheating and to help dust removal
- Straight dust pathway for best dust removal



Dual Vacuum Channel    Inside Fan    Straight dust Pathway

# Non-Vacuum Orbital Sander



Random Orbital Sander



DESCRIPTION	With Grip Pad	With PSA Pad	PACKAGING		
			QTY / BOX	BOX / CASE	QTY / CASE
3" (3/16") Non-Vac Random Orbital Sander	87300	-	1	1	1
3" (3/32") Non-Vac Random Orbital Sander	86300	-	1	1	1
5" (3/16") Non-Vac Random Orbital Sander	87400	87100	1	1	1
5" (3/32") Non-Vac Random Orbital Sander	86400	86100	1	1	1
6" (3/16") Non-Vac Random Orbital Sander	87500	87200	1	1	1
6" (3/32") Non-Vac Random Orbital Sander	86500	86200	1	1	1

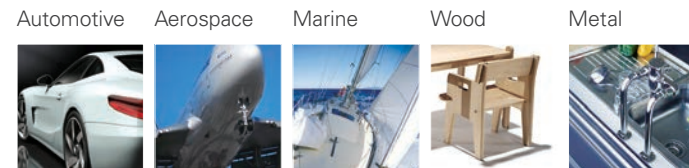
# GRINDING PRODUCTS

Sunmight Quick Change Disc is great for heavy-duty sanding. Sunmight Ceramic Quick Change Disc delivers faster cutting, greater durability, and improved productivity. Sundisc is a revolutionary replacement for fiber discs, featuring a multi-layer design that delivers better cutting performance and longer life.

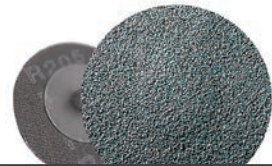
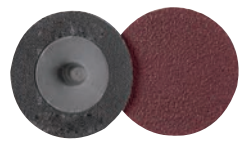
## Technical Specifications

**Grain** Ceramic, Alumina Zirconia  
**Bond** Phenolic Resin  
**Coating** Closed Coat  
**Grit Range** 24 ~ 80

### Application



## Quick Change Discs



DESCRIPTION	GRIT				PACKAGING			
	24	36	50	80	GRIT	QTY / BOX	BOX / CASE	QTY / CASE
2" Ceramic Quick Change Disc	90701	90702	90704	90706	24~80	25	4	100
3" Ceramic Quick Change Disc	90601	90602	90604	90606	24~80	25	4	100
2" Alumina Zirconia Quick Change Disc	00201	00202	00204	00206	24~80	25	4	100
3" Alumina Zirconia Quick Change Disc	00101	00102	00104	00106	24~80	25	4	100

## Sundisc



DESCRIPTION	GRIT				PACKAGING			
	24	36	50	80	GRIT	QTY / BOX	BOX / CASE	QTY / CASE
5" Ceramic Fiber Disc	74301	74302	74304	74306	24~80	25	4	100
7" Ceramic Fiber Disc	74401	74402	74404	74406	24~80	25	4	100
4-1/2" Alumina Zirconia Fiber Disc	72201	72202	72204	72206	24~80	25	4	100
5" Alumina Zirconia Fiber Disc	72301	72302	72304	72306	24~80	25	4	100
7" Alumina Zirconia Fiber Disc	72401	72402	72404	72406	24~80	25	4	100

## File Belts



DESCRIPTION	GRIT				PACKAGING			
	24	36	50	80	GRIT	QTY / CASE	BOX / CASE	QTY / CASE
1/2" x 18" Ceramic File Belt	91001	91002	91004	91006	24~80	10	4	40
3/4" x 13" Ceramic File Belt	92001	92002	92004	92006	24~80	10	4	40

## Cut-Off wheels



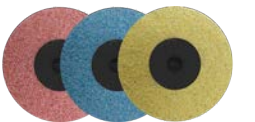
DESCRIPTION	THICKNESS		PACKAGING		
	1/32"	1/16"	QTY / BOX	BOX / CASE	QTY / CASE
3" Ceramic Cut-Off wheels	89100	89200	5	10	50
4" Ceramic Cut-Off wheels	89300	-	50	1	50

## Flap Discs



DESCRIPTION	GRIT			PACKAGING			
	40	60	80	GRIT	QTY / CASE	BOX / CASE	QTY / CASE
4-1/2" x 7/8" A/Z Flap Discs T27	86103	86105	86106	40~80	10	1	10
4-1/2" x 7/8" A/Z Flap Discs T29	86603	86605	86606	40~80	10	1	10

## Surface Prep Discs



DESCRIPTION	GRIT			PACKAGING		
	Brown (Coarse)	Maroon (Medium)	Blue (Very Fine)	QTY / BOX	BOX / CASE	QTY / CASE
3" Surface Prep Discs	81851	81852	81853	25	4	100
2" Surface Prep Discs	81861	81862	81863	25	4	100

# RETAIL PACKS

Sunmight retail packs are offered in the most popular sizes and grits. They are packaged in small, convenient quantities, and designed to be displayed on pegboard hooks.

## Technical Specifications

**Type** Discs, Pads, Sheets  
**Grit Range** 24 ~ 2000

### Application

Automotive Aerospace Marine Wood Metal

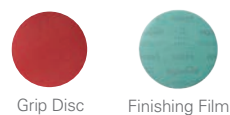


## Gold Discs & Sheets



DESCRIPTION	GRIT					PACKAGING					
	40	80	180	220	320	GRIT	QTY / BOX	BOX / CASE	QTY / CASE		
6" No hole Gold PSA Disc Retail Pack	02303R	02306R	02310R	02311R	02314R	40 80~320	3	5	10	30	50
6" No hole Gold Grip Disc Retail Pack	02403R	02406R	02410R	02411R	02414R	40 80~320	3	5	10	30	50
2-3/4" x 16-1/2" Gold PSA File Sheet Retail Pack	05203R	05206R	-	-	-	40~80	3	10	30		
9" x 11" Gold Sanding Sheet Retail Pack	09103R	09106R	09110R	09111R	09114R	40 80~320	3	5	10	30	50

## Finishing Discs (Mixed Pack)



DESCRIPTION	GRIT		PACKAGING			
	1500 Film & 3000 Sun Foam		GRIT	QTY / BOX	BOX / CASE	QTY / CASE
6" Finishing Grip Disc Retail Pack (#1500 Film & #3000 Foam Mixed)	01470R		1500 3000	3 Film 2 Foam	10	50

## Waterproof Sheets



Sheet



DESCRIPTION	GRIT							PACKAGING			
	400	600	800	1000	1200	1500	2000	GRIT	QTY / BOX	BOX / CASE	QTY / CASE
9" x 11" Waterproof Sheet Retail Pack	08116R	08118R	08119R	08120R	08121R	08122R	08123R	400~2000	5	10	50

## Grinding Products



R Type Disc

Sundisc



DESCRIPTION	GRIT		PACKAGING			
	24	36	GRIT	QTY / BOX	BOX / CASE	QTY / CASE
3" Ceramic Quick Change Disc Retail Pack	90601R	90602R	24~36	3	10	30
5" Ceramic Fiber Grinding Disc Retail Pack	74301R	74302R	24~36	2	10	20

## Scuff Pads



Pad



DESCRIPTION	GRIT		PACKAGING		
	Maroon (Very Fine)	Gray (Ultra Fine)	QTY / BOX	BOX / CASE	QTY / CASE
6" x 9" Scuff Pad Retail Pack	80100R	80200R	3	10	30
4.5" x 9" Flex Scuff Pad Retail Pack	80500R	80600R	3	10	30

# ACCESSORIES

Sunmight Disc Pads makes it easy to attach and remove sanding disc. Our strong high-quality backing provides long life.

## Technical Specifications

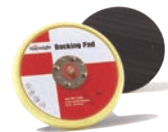
**Type** Pads for PSA & Grip  
**Size** 3", 5" and 6"  
**Treads** 5/16"-24

### Application

Automotive Aerospace Marine Wood Metal



## Disc Pads



Backing Pads



DESCRIPTION	PART NO.	PACKAGING		
		QTY / BOX	BOX / CASE	QTY / CASE
5" No hole PSA Disc Pad	08100	1	10	10
5" 5 hole PSA Disc Pad	08700	1	10	10
6" No hole PSA Disc Pad	08200	1	10	10
6" 6 hole PSA Disc Pad	08900	1	10	10
3" No hole Grip Disc Pad	09300	1	10	10
5" No hole Grip Disc Pad	08300	1	10	10
5" 5 hole Grip Disc Pad	08800	1	10	10
5" Channel Grip Disc Pad	08850	1	10	10
6" No hole Grip Disc Pad	08400	1	10	10
6" No hole Grip Soft Disc Pads	08500	1	10	10
5" No hole Grip Soft Disc Pads	08600	1	10	10
6" 6 hole Grip Disc Pad	09000	1	10	10
5" Multi-hole Grip Disc Pad	09100	1	10	10
6" Multi-hole Grip Disc Pad	09200	1	10	10
3" Multi-hole Grip Disc Pad	09350	1	10	10
5" Half Moon PSA Pad	09800	1	5	5
5" Half Moon Grip Pad	09900	1	5	5

## Interface Pads



Interface Pads



DESCRIPTION	PART NO.	PACKAGING		
		QTY / BOX	BOX / CASE	QTY / CASE
3" No hole Soft Interface Pad	09400	1	5	5
5" No hole Soft Interface Pad	09500	1	5	5
6" No hole Soft Interface Pad	09600	1	5	5
6" 17 hole Soft Interface Pad	09650	1	5	5
6" Multi-hole Soft Interface Pads	09700	1	5	5
5" Multi-hole Pad Saver	09150	1	5	5
6" Multi-hole Pad Saver	09250	1	5	5

## Hand Sanders & Sanding Boards



Hand Sanders & Sanding Boards



DESCRIPTION	PART NO.	PACKAGING		
		QTY / BOX	BOX / CASE	QTY / CASE
3" Grip Hand Sander	07300	1	5	5
5" PSA Hand Sander	07450	1	5	5
5" Grip Hand Sander	07550	1	5	5
6" PSA Hand Sander	07400	1	5	5
6" Grip Hand Sander	07500	1	5	5
2 3/4" x 16" PSA Sanding Board	07600	1	5	5
2 3/4" x 16" Grip Sanding Board	07700	1	5	5
2 3/4" x 7 3/4" Grip Sanding Board	07800	1	5	5
2 3/4" x 7 3/4" Grip Sanding Board	07900	1	5	5

## Dry Guide Coat



Dry Guide Coat



DESCRIPTION	PART NO.	PACKAGING		
		QTY / BOX	BOX / CASE	QTY / CASE
Dry Guide Coat	08000	1	4	4

# PAINT SUPPLIES

Sunmicht offers a complete range of high-quality painter supplies designed to deliver professional results, including masking film, masking paper, compound, masking tape, paint and mixing cups.

## Application

Automotive Aerospace Marine Wood Metal



## Paint Cups



DESCRIPTION	SIZE					PACKAGING
	3 oz (90ml)	6 oz (180ml)	13.5 oz (400ml)	22 oz (650ml)	28 oz (850ml)	
Paint Cup System 125 µm	38800	38400	38500	38600	38700	50 Liners, 50 Lids, 20 Stoppers, 1 Collar, and 1 Hard Cup
Paint Cup System 190 µm	38850	38450	38550	38650	38750	
Hard Cup & Collar	38490		38590	38690	38790	

We offer a variety of adapters that are compatible with most spray guns. Please contact us if you need assistance with adapters.

## NEW Mixing Cup



DESCRIPTION	SIZE				PACKAGING
	1 Pint (400ml)	1 Quart (500ml)	2.5 Quarts (1900ml)	5 Quarts (4000ml)	
Mixing Cup	38470	38570	38770	38870	100 Cups (1 Pint ~ 2.5 Quarts) 40 Cups (5 Quarts)
Lid for Mixing Cup	38460	38560	38760	38860	200 Lids

## Masking Tape



DESCRIPTION	PART NO.	PACKAGING
Yellow Masking Tape (3/4" x 55M)	38900	48
Yellow Masking Tape (1-1/2" x 55M)	38950	24
Yellow Masking Tape (2" x 55M)	38980	20
Green Premium Masking Tape (3/4" x 55M)	38910	48
Green Premium Masking Tape (1-1/2" x 55M)	38960	24
Green Premium Masking Tape (2" x 55M)	38970	20

**Yellow Masking Paper** offers dependable performance for everyday masking. Resistant to moisture and heat up to 120°C (248°F) for 30 minutes, it works well with water-based paints and a variety of coatings. Its flexible design allows for easy application on curves and irregular surfaces.

**Green Masking Paper** is a premium masking tape that is thicker and sturdy. It provides a strong hold while peeling off cleanly without leaving marks. With resistance to water and temperatures up to 120°C (248°F) for 30 minutes, it's compatible with many paint and lacquer systems.

## Masking Film



DESCRIPTION	SIZE		PACKAGING
	16 x 350'	20 x 350'	
Masking Film (9 micron)	06725	06726	QTY / Case 1
Premium Masking Film (12 micron)	06728	06729	1

## Masking Paper



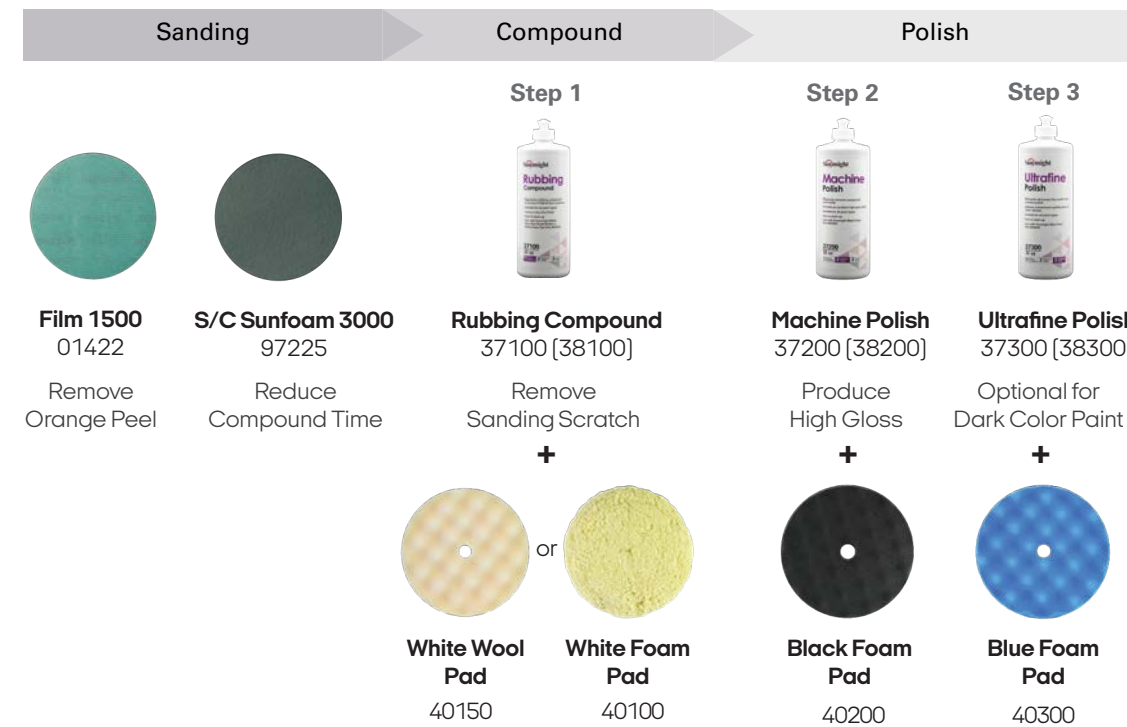
DESCRIPTION	PART NO.	PACKAGING
		QTY / CASE
White Polycoated Masking Paper (6" x 750')	06731	6
White Polycoated Masking Paper (12" x 750')	06732	3
White Polycoated Masking Paper (18" x 750')	06733	2
White Polycoated Masking Paper (36" x 750')	06734	1

# Polishing Products



DESCRIPTION	SIZE		PACKAGING
	32 oz	1 Gallon	QTY / Case
Rubbing Compound	37100	38100	6 (32oz), 4 (Gallon)
Machine Polish	37200	38200	6 (32oz), 4 (Gallon)
Ultrafine Polish	37300	38300	6 (32oz), 4 (Gallon)
8" White Foam Pad	40100		1
8" Black Foam Pad	40200		1
8" Blue Foam Pad	40300		1
7.5" Wool Pad	40150		1
16 x 16" Microfiber Cloth	40400		4

## Polishing Steps



## NEW Collision Wrap



DESCRIPTION	PART NO.	PACKAGING
Collision Wrap 36" x 120'	06740	1

# INDEX

Item No.	Description	Page	Item No.	Description	Page
763xx	Ceramic Film Grip Disc - 3" Multi-hole	11	971xx	Sunfoam SC Grip Disc - 3" No hole	21
764xx	Ceramic Film Grip Disc - 5" Multi-hole	11	972xx	Sunfoam SC Grip Disc - 6" No hole	21
765xx	Ceramic Film Grip Disc - 6" Multi-hole	11	035xx	Flexible Foam - 3" Multi-hole	22
770xx	Ceramic Film PSA Disc - 5" No hole (Link Roll)	11	037xx	Flexible Foam - 6" Multi-hole	22
761xx	Ceramic Film Grip Disc - 5" No hole	11	60100	Flexible Pad 3" x 4-3/4"	23
785xx	Ceramic Film PSA Disc - 6" No hole (Link Roll)	11	601xx	Flexible Film Sheets - 5-1/4" x 6-3/4"	23
762xx	Ceramic Film Grip Disc - 6" No hole	11	602xx	Flexible Film Discs - 6" No hole	23
766xx	Ceramic Film Grip Sheet Roll - 2-3/4" x 13.12 yd.	11	89xxx	Sanding Sponges	24
010xx	Film Grip Disc - 8" 8 hole	12 - 13	820xx	Sun Net Sheet Roll - 2.75" x 33.5' Mesh	25
012xx	Film Grip Disc - 5" No hole	12 - 13	821xx	Sun Net Grip Disc - 5" Mesh	25
014xx	Film Grip Disc - 6" No hole	12 - 13	822xx	Sun Net Grip Disc - 6" Mesh	25
016xx	Film Grip Disc - 8" No hole	12 - 13	829xx	Sun Net Grip Disc - 3" Mesh	25
018xx	Film Grip Disc - 6" 6 hole	12 - 13	072xx	Waterproof Plain Sheet - 5-1/2" x 9"	26
466xx	Film Grip Disc - 5" 9 hole (Festool Type)	12 - 13	081xx	Waterproof Plain Sheet - 9" x 11"	26
473xx	Film Grip Disc - 5" Multi-hole	12 - 13	80100 - 80600	Scuff Pads & Rolls	27
474xx	Film Grip Disc - 6" Multi-hole	12 - 13	81100 - 81200	Flex Scuff Roll - 4.5" x 11 yd.	27
476xx	Film Grip Disc - 6" 17 hole	12 - 13	818xx	Scuff Discs - 6"	27
512xx	Film Grip Disc - 5" 5 hole	12 - 13	84100 - 84200	Vacuum Unit	28
513xx	Film Grip Disc - 6" 9 hole (Festool Type)	12 - 13	84300	Sanding Cart	28
542xx	Film Grip Disc - 3" No hole	12 - 13	84150 - 84160	Pneumatic Sanding Kit	30
005xx	Film PSA Disc - 6" No hole (Link Roll)	14 - 15	84250 - 84260	Electric Sanding Kit	30
011xx	Film PSA Disc - 5" No hole	14 - 15	85800 - 88400	Vacuum Sander	31
013xx	Film PSA Disc - 6" No hole	14 - 15	88500 - 88700	Electric Sander	31
015xx	Film PSA Disc - 8" No hole	14 - 15	86100 - 86500	3/32" Random Orbital Sander	31
041xx	Film Plain File Sheet - 2-3/4" x 17-1/2"	14 - 15	87100 - 87500	3/16" Random Orbital Sander	31
042xx	Film PSA File Sheet - 2-3/4" x 16-1/2"	14 - 15	001xx	A/Z Quick Change Disc - 3" R Type	32
044xx	Film Grip File Sheet - 2-3/4" x 16-1/2"	14 - 15	002xx	A/Z Quick Change Disc - 2" R Type	32
062xx	Film PSA Sheet Roll - 2-3/4" x 25 yd.	14 - 15	906xx	Ceramic Quick Change Disc - 3" R Type	32
112xx	Film Grip Sheet Roll - 4-1/2" x 25 yd.	14 - 15	907xx	Ceramic Quick Change Disc - 2" R Type	32
221xx	Film PSA Sheet Roll - 2-3/4" x 45 yd.	14 - 15	722xx	Sundisc(Fiber Discs) A/Z - 4-1/2"	32
223xx	Film PSA Sheet Roll - 4-1/2" x 25 yd.	14 - 15	723xx	Sundisc(Fiber Discs) A/Z - 5"	32
331xx	Film PSA Disc - 5" No hole (Link Roll)	14 - 15	724xx	Sundisc(Fiber Discs) A/Z - 7"	32
511xx	Film PSA Disc - 5" 5 hole	14 - 15	743xx	Sundisc(Fiber Discs) Ceramic - 5"	32
022xx	Gold Grip Disc - 5" No hole	16 - 17	744xx	Sundisc(Fiber Discs) Ceramic - 7"	32
024xx	Gold Grip Disc - 6" No hole	16 - 17	910xx	Ceramic File Belt Ceramic - 1/2" x 18"	33
028xx	Gold Grip Disc - 6" 6 hole	16 - 17	920xx	Ceramic File Belt Ceramic - 3/4" x 13"	33
435xx	Gold Grip Disc - 3" No hole	16 - 17	89100 - 89300	Ceramic Cut Off Wheel - 3" & 4"	33
522xx	Gold Grip Disc - 5" 5 hole	16 - 17	861xx	Flap Discs - 4-1/2" T27	33
581xx	Gold Grip Disc - 5" 8 hole	16 - 17	866xx	Flap Discs - 4-1/2" T29	33
006xx	Gold PSA Disc - 6" No hole (Link Roll)	18 - 19	8185x	Surface Prep Discs - 3"	33
021xx	Gold PSA Disc - 5" No hole	18 - 19	8186x	Surface Prep Discs - 2"	33
023xx	Gold PSA Disc - 6" No hole	18 - 19	xxxxxR	Retail Pack	34 - 35
025xx	Gold PSA Disc - 8" No hole	18 - 19	08100 - 09300	Backing Pad	36
051xx	Gold Plain File Sheet - 2-3/4" x 17-1/2"	18 - 19	09400 - 09700	Interface Pad	37
052xx	Gold PSA File Sheet - 2-3/4" x 16-1/2"	18 - 19	07300 - 07900	Hand Sanders & Sanding Boards	37
054xx	Gold Grip File Sheet - 2-3/4" 16-1/2"	18 - 19	08000	Dry Guide Coat	37
061xx	Gold PSA Sheet Roll - 2-3/4" x 45 yd.	18 - 19	38800 - 38790	Paint Cups	38
091xx	Gold Plain Sheet - 9" x 11"	18 - 19	38470 - 38870	Mixing Cup	38
222xx	Gold PSA Sheet Roll - 2-3/4" x 25 yd.	18 - 19	38460 - 38860	Lid for Mixing Cup	38
321xx	Gold Soft Flex Roll - 4-1/2" x 27 yd.	18 - 19	38900 - 38970	Masking Tape	39
341xx	Gold PSA Disc - 5" No hole PSA (Link Roll)	18 - 19	06725 - 06729	Masking Film	39
521xx	Gold PSA Disc - 5" 5 hole	18 - 19	06731 - 06734	Masking Paper	39
961xx	Sunfoam Grip Disc - 3" No hole	21	37100 - 38970	Compounds	40
962xx	Sunfoam Grip Disc - 6" No hole	21	40100 - 40400	Polishing Pads & Cloth	40
			06740	Collision Wrap	40

# CROSS REFERENCE CHART

3M	SUN	3M	SUN	3M	SUN	3M	SUN	3M	SUN	3M	SUN	3M	SUN	3M	SUN
00367	01103	00975	02414	01180	05409	01357	00512	01606	02110	01921	74404	02542	09113		
00368	01102	00976	02413	01181	05406	01358	00511	01607	02109	01922	74402	02543	09112		
00371	00506	00977	02412	01182	05403	01359	00510	01608	02108	01923	74401	02544	09111		
00373	01303	00978	02411	01184	01422	01360	00509	01609	02107	01943	74304	02545	09110		
00374	01302	00979	02410	01185	01421	01361	00508	01610	02106	01944	74302	02546	09109		
00377	01506	00980	02409	01186	01420	01362	00507	01619	02116	01945	74301	02547	09108		
00379	01503	00981	02408	01187	02419	01363	00506	01620	02114	01951	74404	02548	09107		
00380	01502	00982	02407	01188	02416	01373	01716	01622	02112	01952	74402	02549	09106		
00391	04206	00983	02406	01189	02418	01375	01714	01623	02111	01953	74401	02590	06116		
00393	04203	01050	01822	01190	02414	01377	01712	01624	02110	01987	89100	02591	06114		
00394	04202	01055	02218	01191	02417	01378	01711	01625	02109	01988	89200	02593	06112		
00512	02406	01057	02126	01194	02410	01379	01710	01626	02108	01989	89100	02594	06111		
00515	02403	01059	02124	01195	02409	01380	01709	01628	02106	01990	89200	02595	06110		
00521	01606	01062	02121	01196	02408	01381	01708	01634	02716	01991	89200	02596	06109		
00524	01603	01063	02120	01197	02407	01382	01707	01635	02714	02000	08118	02597	06108		
00525	01602	01064	02109	01198	02406	01383	01706	01638	02711	02001	08117	02598	06107		
00539	04406	01067	02106	01202	00617	01396	09704	01639	02710	02002	08116	02599	06106		
00542	04403	01068	01821	01203	00616	01397	09702	01640	02709	02004	08114	02621	07220		
00543	04402	01069	01820	01205	00614	01398	00201	01641	02708	02006	08112	02622	07221		
00621	01006	01070	01819	01206	00613	01406	00104	01642	02707	02007	08111	02623	07222		
00624	01003	01071	01818	01208	00611	01407	00102	01643	02706	02019	08124	02624	07223		
00625	01002	01072	02817	01209	00610	01408	00101	01667	01703	02020	08123	02625	07224		
00907	54222	01073	02816	01210	00609	01417	03417	01679	05206	02021	07220	02708	76614		
00908	54221	01075	02814	01211	00608	01419	03416	01680	05203	02022	07221	05441	07800		
00909	54220	01077	02812	01212	00607	01420	03414	01681	02216	02023	07222	05444	07600		
00910	54219	01078	02811	01213	00606	01421	03413	01682	02214	02032	08122	05546	08200		
00911	54218	01079	02810	01218	02416	01422	03412	01684	02211	02033	08121	05551	09000		
00912	54217	01080	02809	01219	02414	01423	03411	01685	02210	02034	08120	05555	08100		
00913	54216	01081	02808	01221	02411	01424	03410	01686	02209	02035	08119	05556	08200		
00914	54214	01082	02807	01222	02410	01425	03409	01687	02208	02036	08118	05575	08100		
00915	54212	01083	02806	01223	02409	01426	03408	01688	02206	02037	08117	05576	08200		
00916	54211	01100	02506	01224	02408	01427	03407	01728	01206	02038	08116	05655	08700		
00917	54210	01101	02503	01225	02407	01428	03406	01729	01202	02040	08114	05656	08900		
00918	54209	01105	02319	01251	02316	01432	00617	01743	01606	02042	08112	05741	07900		
00919	54208	01106	02318	01252	02314	01434	00616	01744	01603	02043	08111	05744	07700		
00920	54207	01107	02317	01253	02311	01435	00614	01745	01602	02044	07223	05755	08300		
00921	54206	01108	02316	01254	02310	01436	00613	01791	04406	02045	07224	05756	08400		
00922	02419	01109	02314	01260	02306	01437	00612	01793	04403	02085	96225	05775	08300		
00923	02418	01110	02312	01261	02406	01438	00611	01794	04402	02087	96125	05776	08400		
00950	01422	01111	02311	01262	02403	01439	00610	01810	76517	02090	96220	05777	09600		
00951	01222	01112	02310	01318	01321	01440	00609	01811	76516	02112	09109	05855	08800		
00953	01220	01113	02309	01319	01320	01441	00608	01812	76514	02114	09107	05856	09200		
00954	01219	01114	02308	01320	01319	01442	00607	01814	76512	02115	09106	06537	06731		
00955	01218	01115	02307	01321	01318	01443	00606	01815	76511	02138	05103	06538	06732		
00956	01217	01116	02306	01323	00516	01485	02514	01816	76510	02220	04106	06539	06733		
00957	01216	01117	02303	01325	00514	01488	02511	01817	76509	02221	04103	06540	06734		
00959	01214	01136	02819	01327	00512	01489	02510	01818	76508	02222	04102	06652	38910		
00961	01212	01137	02818	01328	00511	01490	02509	01819	76507	02230	04206	06654	38960		
00962	01211	01138	02817	01329	00510	01493	02506	01820	76506	02231	04203	06656	38970		
00963	01210	01139	02816	01330	00509	01506	02306	01850	01006	02232	04202	06724	06725		
00964	01209	01140	02814	01331	00508	01545	01103	01852	01003	02258	04103	06728	06728		
00965	01208	01141	02812	01332	00507	01546	01102	01853	01002	02469	05411	06742	06729		
00966	01207	01142	02811	01333	00506	01547	01303	01860	05414	02470	05410	07447	80100		
00967	01206	01143	02810	01343	09601	01548	01302	01862	05411	02472	05409	07448	80200		
00968	01421	01144	02809	01344	09602	01549	01506	01863	05410	02473	05408	07521	80500		
00969	01420	01145	02808	01345	09604	01550	01503	01864	05409	02536	09119	07522	80600		
00970	01419	01146	02807	01346	09606	01551	01502	01865	05408	02537	09118	07747	80100		
00971	01418	01147	02806	01352	00517	01602	02116	01913	74304	02538	09117	07748	80200		
00972	02417	01178	05411	01353	00516	01603	02114	01914	74302	02539	09116	07777	80100		
00973	02416	01179	05410	01355	00514	01605	02111	01915	74301	02541	09114	20356	09200		

# CROSS REFERENCE CHART

3M	SUN	3M	SUN	3M	SUN	NORTON	SUN	NORTON	SUN	NORTON	SUN	NORTON	SUN
20427	09300	30666	01423	33543	03722	00402	06731	06149	22211	06376	01421	23593	01602
26000	38650	30667	01422	33544	03723	00403	06732	06150	22210	06377	01422	23596	01006
26024	38750	30668	01421	33550	03519	00404	06733	06151	22209	07745	76406	23597	01003
26028	38850	30669	01420	33551	03520	00407	06734	06152	22208	07753	76408	23598	01002
26112	38550	30670	01419	33552	03521	06728	06728	06153	22206	07755	76409	23608	04206
26114	38450	30671	01418	33553	03522	47590	38900	06165	00617	07756	76410	23609	04203
26301	38600	30684	01406	33554	03523	47592	38950	06166	80500	07757	76411	23610	04202
26312	38500	30686	01403	33557	03516	47593	38980	06167	80600	07760	76412	23614	04406
26314	38400	30687	01402	33558	03518	02161	09500	06176	00616	07763	76414	23615	04403
26325	38700	30703	76616	33620	91001	02162	09600	06177	00614	07765	76416	23616	04402
26328	38800	30705	76614	33622	91006	03726	07500	06178	00611	07770	76506	23620	04106
26334	38910	30707	76612	34490	04403	03727	07400	06179	00610	07773	76508	23621	04103
26338	38960	30708	04411	34492	04406	05457	09400	06182	00606	07774	76509	23622	04102
26340	38970	30709	04410	34494	04408	05608	01118	06195	05203	07775	76510	25244	01106
27701	90701	30710	04409	34495	04409	05616	01218	06196	05206	07776	76511	25307	01103
27702	90601	30711	04408	34496	04410	05990	54206	06198	00517	07777	76512	25436	01102
27705	90701	30713	04406	34497	04411	05991	54208	06199	01318	07781	76514	25444	01206
27706	90601	30715	04403	34780	47618	05992	54209	06200	01319	07784	76516	25595	04207
27717	90706	30716	04402	34781	47619	05993	54210	06202	01417	07785	76517	25684	01203
27718	90606	30760	76519	36142									

# CROSS REFERENCE CHART

NORTON	SUN	NORTON	SUN	NORTON	SUN	NORTON	SUN	NORTON	SUN	Indasa	SUN
31460	34110	31578	52211	31681	06116	39388	08112	49838	00610	64822	74301
31461	34109	31579	52210	31683	06114	39389	08111	49839	00609	579558	88600
31462	34108	31580	52209	31685	06112	40385	54209	49840	00608	1-1000	08120
31463	34107	31581	52208	31686	06111	40498	33110	49841	00607	1-1200	08121
31464	34106	31582	52207	31687	06110	40499	33109	49842	00606	1-1500	08122
31466	02321	31583	52206	31688	06109	40500	33108	49900	02214	1-180	08110
31467	02320	31586	02820	31689	22208	40501	33107	49902	02211	1-2000	08123
31468	02319	31587	02819	31690	22207	40502	33106	49903	02210	1200-24	72301
31469	02318	31588	02818	31691	22206	40508	00510	49904	02209	1200-36	72302
31470	00617	31589	02817	34786	02806	40509	00509	49905	02208	1200-50	72304
31471	00616	31590	02816	34787	02807	40510	00508	49906	02207	1-220	08111
31473	00614	31592	02814	34788	02808	40511	00507	49907	02206	1-240	08112
31474	00613	31594	02812	34789	02809	40512	00506	49908	02416	1-2500	08124
31475	00612	31595	02811	34790	02810	40518	01210	49909	02414	1-280	08113
31476	00611	31596	02810	34791	02811	40519	01209	49910	02413	1-320	08114
31477	00610	31597	02809	34792	02812	40520	01208	49911	02411	1-360	08115
31478	00609	31598	02808	34793	02814	40521	01207	49912	02410	1-400	08116
31479	00608	31599	02807	34794	02816	40522	01206	49913	02409	1-500	08117
31480	00607	31600	02806	34795	02817	40528	01410	49914	02408	1-600	08118
31481	00606	31609	02514	34796	02818	40529	01409	49915	02407	1-800	08119
31519	54219	31612	02511	34797	02819	40530	01408	49916	02406	2-1000	07220
31521	54217	31613	02510	34800	02406	40531	01407	52692	05414	2-1200	07221
31524	54214	31614	02509	34801	02403	40532	01406	52836	07700	2-1500	07222
31526	54212	31617	02506	34802	01606	42089	09600	55373	00516	2-2000	07223
31527	54211	31622	09118	34803	01603	42094	07800	55374	00514	2-2500	07224
31528	54210	31623	09117	34804	05406	42095	07900	55376	00512	320-1000	43520
31532	54206	31624	09116	34805	05403	42474	33111	55377	33116	320-120	43508
31534	02221	31626	09114	35900	54220	42724	07600	55378	33114	320-150	43509
31535	02220	31627	09113	36995	54216	44926	54207	55379	33113	320-180	43510
31536	02219	31628	09112	36996	54218	47434	54222	55380	33112	320-220	43511
31537	02218	31629	09111	38561	72304	48340	00511	57606	32114	320-240	43512
31538	02217	31630	09110	38562	72302	49537	01216	57608	32116	320-320	43514
31539	02216	31631	09109	38563	72301	49538	01214	57611	32117	320-400	43516
31541	02214	31632	09108	38590	72406	49540	01212	57612	32118	320-500	43517
31543	02212	31633	09107	38591	72405	49541	01211	57613	32119	320-600	43518
31544	02211	31634	09106	38592	72404	49542	01416	58000	80100	320-80	43506
31545	02210	31635	05211	38593	72402	49543	01414	58002	80200	320-800	43519
31546	02209	31636	05210	38594	72401	49544	01413	60321	22214	3700R-1200	32121
31547	02208	31637	05209	38600	72306	49545	01412	60322	22211	3700R-180	32110
31548	02207	31638	05208	38670	00204	49546	01411	60323	22210	3700R-240	32112
31549	02206	31639	05207	38671	00202	49557	22116	60324	22209	3700R-320	32114
31551	02421	31640	05206	38672	00201	49558	22114	60325	22206	3700R-400	32116
31552	02420	31641	05411	38673	00104	49561	22111	60352	22216	3700R-600	32118
31553	02419	31642	05410	38674	00102	49562	22110	60577	76519	3700R-800	32119
31554	02418	31643	05409	38675	00101	49563	22109	62318	90702	3DASAND	87300
31555	02417	31644	05408	39369	07224	49566	06206	62320	90704	500-100	02107
31556	02416	31645	05407	39370	07223	49821	34116	62324	90706	500-100LR	34107
31558	02414	31646	05406	39371	07222	49822	34114	62328	90602	500-120	02108
31559	02413	31647	05111	39372	07221	49824	34112	62330	90604	500-120LR	34108
31560	02412	31648	05110	39373	07220	49825	34111	62334	90606	500-150	02109
31561	02411	31649	05109	39377	08124	49826	34110	63535	76406	500-150LR	34109
31562	02410	31650	05108	39378	08123	49827	34109	63536	76408	500-180	02110
31563	02409	31651	05107	39379	08122	49828	34108	63537	76409	500-180LR	34110
31564	02408	31652	05106	39380	08121	49829	34107	63538	76410	500-220	02111
31565	02407	31654	05410	39381	08120	49830	34106	63539	76411	500-220LR	34111
31566	02406	31656	05408	39382	08119	49833	00616	63540	76412	500-240LR	34112
31571	52218	31657	05407	39383	08118	49834	00614	63542	76414	500-280	02113
31573	52216	31662	01608	39384	08117	49835	00613	63543	76416	500-280LR	34113
31575	52214	31663	01607	39385	08116	49836	00612	64820	74304	500-320	02114
31577	52212	31664	01606	39386	08114	49837	00611	64821	74302	500-320LR	34114

# CROSS REFERENCE CHART

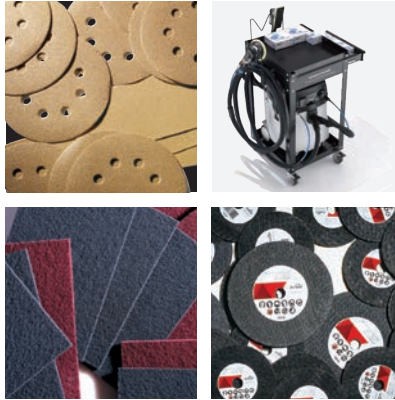
Indasa	SUN	Indasa	SUN	Indasa	SUN	Mirka	SUN	Mirka	SUN
500-400	02116	52-80	02206	61-240	02412	00105	08100	22-101-220	09111
500-400LR	34116	5DACVSAND	87700	61-280	02413	00106	08200	22-101-320	09114
500-500	02117	5DASAND	87100	61-320	02414	01033	09400	22-101-400	09116
500-500LR	34117	5DASAND	87400	61-40	02403	09166	09700	22-341-040	02303
500-60	02105	600-100	02307	61-400	02416	9190110018	06728	22-342-080	00606
500-600	02118	600-100LR	00607	61-500	02417	9190110019	06729	22-342-100	00607
500-600LR	34118	600-120	02308	61-60	02405	9190170180	38400	22-342-120	00608
500-80	02106	600-120LR	00608	61-600	02418	9190170400	38500	22-342-150	00609
500-800	02119	600-150	02309	61-80	02406	9190170650	38600	22-342-180	00610
500-800LR	34119	600-150LR	00609	620-100	02407	9190170850	38700	22-342-220	00611
500-80LR	34106	600-180	02310	620-1000	02420	9190172180	38450	22-342-320	00614
50-100	02107	600-180LR	00610	620-120	02408	9190172400	38550	22-342-400	00616
50-100LR	34107	600-220	02311	620-1200	02421	9190172650	38650	22-342-500	00617
50-120	02108	600-220LR	00611	620-150	02409	9190172850	38750	22-352-040	02503
50-120LR	34108	600-240	02312	620-180	02410	9191251801	38900	22-352-080	02506
50-150	02109	600-240LR	00612	620-220	02411	9191253601	38950	22-364-040	05203
50-150LR	34109	600-280	02313	620-240	02412	9191254801	38980	22-364-080	05206
50-180	02110	600-280LR	00613	620-280	02413	105GG	08300	22-580-080	06106
50-180LR	34110	600-320	02314	620-320	02414	105V	08700	22-580-120	06108
50-220	02111	600-320LR	00614	620-400	02403	1066F	09600	22-580-150	06109
50-220LR	34111	600-40	02303	620-400	02416	106GG	08400	22-580-180	06110
50-240LR	34112	600-400	02316	620-500	02417	106GM	08400	22-580-220	06111
50-320	02114	600-400LR	00616	620-60	02405	106GV	09000	22-580-320	06114
50-320LR	34114	600-500	02317	620-600	02418	106V	08900	22-580-400	06116
50-400	02116	600-500LR	00617	620-800	02406	18-111-447	80100	22-622-040	02403
50-400LR	34116	600-60	02305	620-800	02419	18-111-448	80200	22-622-080	02406
50-500	02117	600-600	02318	6DACVSAND	87900	18-118-447	80500	22-622-100	02407
50-500LR	34117	600-80	02306	6DASAND	87200	18-118-448	80600	22-622-1000	02420
50-60	02105	600-800	02319	6DASAND	87500	18-573-373	80300	22-622-120	02408
50-600	02118	600-80LR	00606	7302Z-24	00201	18-573-447	80300	22-622-1200	02421
50-600LR	34118	60-100	02307	7302Z-36	00202	18-573-448	80400	22-622-150	02409
50-80	02106	60-100LR	00607	7302Z-50	00204	18-573-943	80400	22-622-180	02410
50-80LR	34106	60-120	02308	7303Z-24	00101	21-104-P1000	08120	22-622-220	02411
50-100	02207	60-120LR	00608	7303Z-36	00102	21-104-P1200	08121	22-622-240	02412
50-1000	02220	60-150	02309	7303Z-50	00104	21-104-P1500	08122	22-622-320	02414
50-120	02208	60-150LR	00609	7600F-1000	01420	21-104-P180	08110	22-622-400	02416
50-1200	02221	60-180	02310	7600F-1200	01421	21-104-P2000	08123	22-622-500	02417
50-150	02209	60-180LR	0061						

# CROSS REFERENCE CHART

Mirka	SUN	Mirka	SUN	Mirka	SUN	Mirka	SUN	Mirka	SUN
23-314-120	34108	23-379-220	02311	23-622-600	02418	24-6MH-150	76509	2B-663-180	05410
23-314-150	34109	23-379-240	02312	23-622-800	02419	24-6MH-180	76510	2B-663-220	05411
23-314-180	34110	23-379-320	02314	23-624-080	02806	24-6MH-220	76511	2B-663-320	05414
23-314-220	34111	23-379-400	02316	23-624-150	02809	24-6MH-240	76512	2C-332-080	02106
23-314-320	34114	23-388-080	02106	23-624-180	02810	24-6MH-320	76514	2C-332-120	02108
23-314-400	34116	23-388-100	02107	23-624-220	02811	24-6MH-400	76516	2C-332-150	02109
23-332-060	02105	23-388-120	02108	23-624-320	02814	24-6MH-500	76517	2C-332-180	02110
23-332-080	02106	23-388-150	02109	23-624-800	02819	24-6MH-600	76518	2C-332-220	02111
23-332-100	02107	23-388-180	02110	23-645-320	47614	2B-332-080	02106	2C-332-600	02118
23-332-120	02108	23-388-220	02111	23-663-040	05403	2B-332-100	02107	2C-341-600	02318
23-332-150	02109	23-388-320	02114	23-663-080	05406	2B-332-120	02108	2C-341-800	02319
23-332-180	02110	23-388-400	02116	24-38P-080	76606	2B-332-150	02109	2C-611-080	47606
23-332-220	02111	23-574-080	06106	24-38P-120	76608	2B-332-180	02110	2C-611-120	47608
23-332-320	02114	23-574-100	06107	24-38P-150	76609	2B-332-220	02111	2C-611-320	47614
23-332-400	02116	23-584-120	06108	24-38P-180	76610	2B-332-320	02114	2C-612-080	02206
23-332-600	02118	23-584-150	06109	24-38P-240	76612	2B-332-400	02116	2C-612-1000	02220
23-332-800	02119	23-584-180	06110	24-38P-320	76614	2B-342-080	02306	2C-612-120	02208
23-341-040	02303	23-584-220	06111	24-38P-400	76616	2B-342-120	02308	2C-612-1200	02221
23-341-060	02305	23-584-240	06112	24-3MF-1000	03520	2B-342-150	02309	2C-612-150	02209
23-341-080	02306	23-584-320	06114	24-3MF-1200	03521	2B-342-180	02310	2C-612-180	02210
23-341-100	02307	23-584-400	06116	24-3MF-1500	03522	2B-342-220	02311	2C-612-220	02211
23-341-120	02308	23-611-080	47606	24-3MF-2000	03523	2B-342-240	02312	2C-612-320	02214
23-341-150	02309	23-611-320	47614	24-3MF-400	03516	2B-342-320	02314	2C-612-400	02216
23-341-180	02310	23-612-060	02205	24-3MF-600	03518	2B-342-400	02316	2C-612-600	02218
23-341-220	02311	23-612-080	02206	24-3MF-800	03519	2B-342-500	02317	2C-612-800	02219
23-341-240	02312	23-612-120	02208	24-3MH-080	76306	2B-574-080	06106	2C-622-080	02406
23-341-320	02314	23-612-150	02209	24-3MH-120	76308	2B-584-120	06108	2C-622-1000	02420
23-341-400	02316	23-612-180	02210	24-3MH-150	76309	2B-584-150	06109	2C-622-120	02408
23-341-500	02317	23-612-220	02211	24-3MH-180	76310	2B-584-180	06110	2C-622-1200	02421
23-341-600	02318	23-612-240	02212	24-3MH-220	76311	2B-584-220	06111	2C-622-180	02410
23-341-800	02319	23-612-280	02213	24-3MH-240	76312	2B-584-320	06114	2C-622-320	02414
23-342-080	02306	23-612-320	02214	24-3MH-320	76314	2B-584-400	06116	2C-622-400	02416
23-342-100	02307	23-612-400	02216	24-3MH-400	76316	2B-611-080	47606	2C-622-500	02417
23-342-120	02308	23-612-600	02218	24-3MH-500	76317	2B-611-120	47608	2C-622-600	02418
23-342-150	02309	23-612-800	02219	24-3MH-600	76318	2B-611-320	47614	2C-622-800	02419
23-342-180	02310	23-614-150	52209	24-570-080	76606	2B-612-080	02206	2C-664-080	05406
23-342-220	02311	23-614-180	52210	24-570-120	76608	2B-612-120	02208	2C-664-120	05408
23-342-240	02312	23-614-220	52211	24-570-150	76609	2B-612-150	02209	2C-664-180	05410
23-342-320	02314	23-614-320	52214	24-570-180	76610	2B-612-180	02210	2C-664-320	05414
23-342-400	02316	23-614-400	52216	24-570-240	76612	2B-612-220	02211	63-578-024	74301
23-342-500	02317	23-615-060	58105	24-570-320	76614	2B-612-240	02212	63-578-036	74302
23-343-080	02306	23-615-080	58106	24-570-400	76616	2B-612-320	02214	63-778-024	74401
23-343-100	02307	23-615-100	58107	24-5MH-080	76406	2B-612-400	02216	63-778-050	74404
23-343-150	02309	23-615-120	58108	24-5MH-120	76408	2B-614-100	52207	65-201-024	90701
23-343-180	02310	23-615-150	58109	24-5MH-150	76409	2B-614-150	52209	65-201-036	90702
23-343-220	02311	23-615-220	58111	24-5MH-180	76410	2B-614-180	52210	65-201-050	90704
23-343-320	02314	23-615-320	58114	24-5MH-220	76411	2B-614-220	52211	65-201-080	90706
23-343-400	02316	23-615-400	58116	24-5MH-240	76412	2B-614-320	52214	65-201-024	90601
23-352-040	02503	23-622-040	02403	24-5MH-320	76414	2B-614-400	52216	65-301-036	90602
23-352-080	02506	23-622-080	02406	24-5MH-400	76416	2B-622-080	02406	65-301-050	90604
23-352-100	02507	23-622-100	02407	24-6MF-1000	03720	2B-622-120	02408	65-301-080	90606
23-352-180	02510	23-622-120	02408	24-6MF-1200	03721	2B-622-150	02409	8A-203-1000	97120
23-364-040	05203	23-622-150	02409	24-6MF-1500	03722	2B-622-180	02410	8A-203-2000	97123
23-364-080	05206	23-622-180	02410	24-6MF-2000	03723	2B-622-220	02411	8A-203-3000	97125
23-364-120	05208	23-622-220	02411	24-6MF-400	03716	2B-622-240	02412	8A-241-1000	97220
23-379-080	02306	23-622-240	02412	24-6MF-600	03718	2B-622-320	02414	8A-241-2000	97223
23-379-100	02307	23-622-280	02413	24-6MF-800	03719	2B-622-400	02416	8A-241-3000	97225
23-379-120	02308	23-622-320	02414	24-6MH-080	76506	2B-622-500	02417	8A-241-360	96215
23-379-150	02309	23-622-400	02416	24-6MH-100	76507	2B-663-080	05406	8A-241-500	96217
23-379-180	02310	23-622-500	02417	24-6MH-120	76508	2B-663-120	05408	913G	09300

# CROSS REFERENCE CHART

Mirka	SUN	Mirka	SUN	Mirka	SUN	Mirka	SUN	Mirka	SUN
915GV	09100	9B-203-180	82910	AE24105025	82212	FY-5MF-1200	47321	MID65020CAUS	88500
915GV28	09100	9B-203-240	82912	AE24105032	82214	FY-5MF-150	47309	MR-350	87300
9A-149-080	82006	9B-203-320	82914	AE24105041	82216	FY-5MF-1500	47322	MR-350CV	85900
9A-149-100	82007	9B-203-400	82916	AE24105061	82218	FY-5MF-180	47310	MR-38CV-1	88400
9A-149-120	82008	9B-232-080	82106	AE24105080	82206	FY-5MF-220	47311	MR-5	87100
9A-149-150	82009	9B-232-120	82108	AE-570-080	82006	FY-5MF-320	47314	MR-525	86400
9A-149-180	82010	9B-232-150	82109	AE-570-120	82008	FY-5MF-400	47316	MR-5SGV	87400
9A-149-220	82011	9B-232-180	82110	AE-570-150	82009	FY-5MF-600	47318	MR-5V	87700
9A-149-240	82012	9B-232-240	82112	AE-570-180	82010	FY-5MF-80	47306	MR-6	87200
9A-149-320	82014	9B-232-320	82114	AE-570-240	82012	FY-5MF-800	47319	MR-625	86500
9A-149-400	82016	9B-232-400	82116	AE-570-320	82014	FY-612-100	01207	MR-6SGV	87400
9A-150-080	82006	AC-203-080	82906	AE-570-400	82016	FY-612-1000	01220	MR-6V	87900
9A-150-100	82007	AC-203-100	82907	AH-232-080	82106	FY-612-120	01208	MRP550CV	87700
9A-150-120	82008	AC-203-120	82908	AH-570-080	82006	FY-612-1200	01221	MRP650CV	87900
9A-150-150	82009	AC-203-150	82909	FA-608-1200	54221	FY-612-150	01209	MS-0150	89200
9A-150-180	82010	AC-203-180	82910	FA-608-1500	54222	FY-612-1500	01222	MS-1238	89200
9A-150-220	82011	AC-203-220	82911	FA-608-600	54218	FY-612-180	01210	MVHB35	88800
9A-150-240	82012	AC-203-240	82912	FA-608-800	54219	FY-612-2000	01223	MVHB38	88900
9A-150-320	82014	AC-203-320	82914	FA61250611000	01220	FY-612-220	01211	MVHB38-K	07900
9A-150-400	82016	AC-203-400	82916	FA61250611200	01221	FY-612-240	01212	XS-23-114-180	32110
9A-203-080	82906	AC-203-600	82918	FA61250611500	01222	FY-612-320	01214	XS-23-114-220	32111
9A-203-100	82907	AC-232-080	82106	FA6125061600	01218	FY-612-40	01203	XS-23-114-240	32112
9A-203-120	82908	AC-232-100	82107	FA6125061800	01219	FY-612-400	01216	XS-23-114-320	32114
9A-203-150	82909	AC-232-120	82108	FA62205061	01418	FY-612-600	01218	XS-23-114-400	32116
9A-203-180	82910	AC-232-150	82109	FA62205081	01419	FY-612-80	01206		
9A-203-220	82911	AC-232-180	82110	FA62205092	01420	FY-612-800	01219		
9A-203-240	82912	AC-232-220	82111	FA62205093	01421	FY-622-100	01407		
9A-203-320	82914	AC-232-240	82112	FA62205094	01422	FY-622-1000	01420		
9A-203-400	82916	AC-232-320	82114	FG-5MH-080	76406	FY-622-120	01408		
9A-203-600	82918	AC-232-400	82116	FG-5MH-120	76408	FY-622-1200	01421		
9A-232-080	82106	AC-232-600	82118	FG-5MH-150	76409	FY-622-150	01409		
9A-232-100	82107	AC-241-080	82206	FG-5MH-180	76410	FY-622-1500	01422		
9A-232-120	82108	AC-241-100	82207	FG-5MH-240	76412	FY-622-180	01410		
9A-232-150	82109	AC-241-120	82208	FG-5MH-320	76414	FY-622-2000	01423		
9A-232-180	82110	AC-241-150	82209	FG-5MH-400	76416	FY-622-220	01411		
9A-232-220	82111	AC-241-180	82210	FG-6MH-080	76506	FY-622-240	01412		



# Experience Sunmight

Premium Abrasive Technology



## Sunmight

### SUNMIGHT USA CORPORATION

14943 Desman Road, La Mirada CA 90638  
TEL 714-952-5020 FAX 714-952-1307  
E-mail [office1@sunmightusa.com](mailto:office1@sunmightusa.com)  
[www.sunmightusa.com](http://www.sunmightusa.com)

2026. 04. 17



Please contact your local distributor  
or Sunmight office for free sample kits.